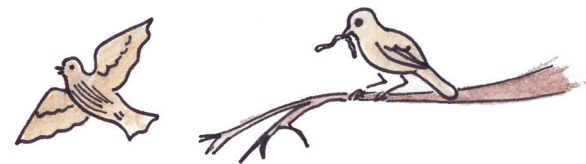


# Opgave 15: Spil efter noder / Jeg ved en lærkerede



A musical score for the first system, consisting of two staves (treble and bass clef) in a 2/4 time signature with a key signature of one sharp (F#). The treble staff contains a sequence of notes: a quarter note (finger 1, with a green frog illustration), a quarter note (finger 3, with a blue bird illustration), a quarter note (finger 4, with a blue bird illustration), a quarter rest, a quarter note (finger 5, with a brown bird illustration), a quarter note (finger 2, with a blue bird illustration), a quarter note (finger 3, with a blue bird illustration), a quarter note (finger 2, with a blue bird illustration), and a quarter note (finger 5, with a carrot illustration). The bass staff contains: a quarter rest, a quarter rest, a quarter note (finger 1, with a dog illustration), a quarter note (finger 3, with a blue globe illustration), a quarter note (finger 3, with a grey sheep illustration), a quarter rest, a quarter rest, a quarter rest, and a quarter note (finger 2, with a blue globe illustration). Fingerings are indicated by numbers 1 through 5 above or below the notes.

A musical score for the second system, continuing the two-staff format. The treble staff contains: a quarter note (finger 3, with a blue bird illustration), a quarter note, a quarter note, a quarter note, and a quarter rest. The bass staff contains: a quarter note (finger 3, with a grey sheep illustration), a quarter note, a quarter note, a quarter note, and a quarter rest.

